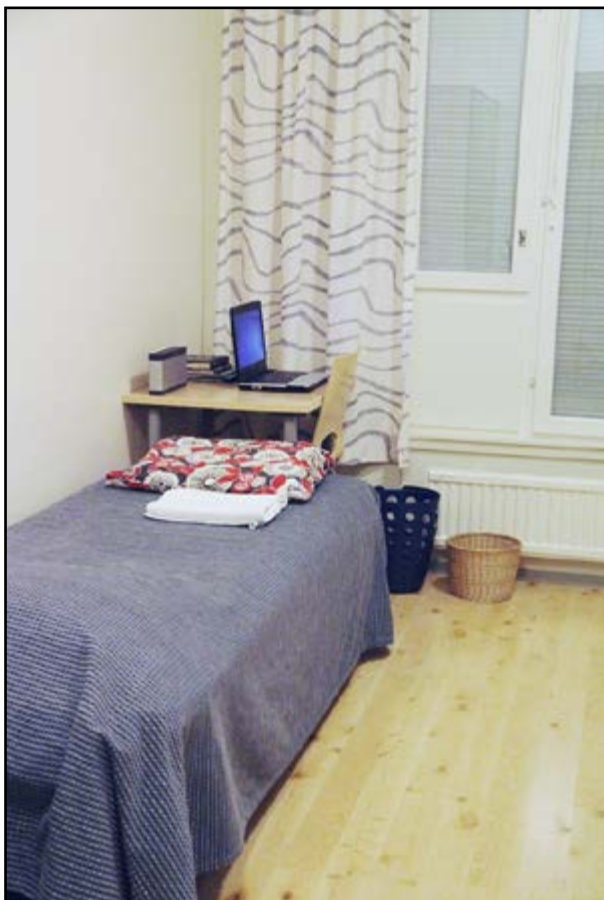


SAFETY AT HOME



Partnership Network
of Finnish Rescue
Services

FOR THE READER

This Safety at Home guide contains advice that can help you improve the safety of your home.

You will also find instructions on what to do in the case of an emergency.

At the end of the guide, you will find a checklist to help you evaluate issues related to your safety.

Partnership Network of Finnish Rescue Services, October 2023

Working group: Joint safety communication working group of Helsinki City Rescue Department, Eastern Uusimaa Emergency Services Department, Central Uusimaa Rescue Department and Western Uusimaa Rescue Department.

Layout: Leena Malinen, Susanne Vuorinen

Photographs: Kim Halmela, Jessica Hattunen, Stina Hällberg, Leena Malinen, Susanne Vuorinen

Original: "Turvallisesti kodissani", 2016, English translation by Virve Siikanen 2020

Modified version of the 2015 guide "Safety at home" produced by Eteva and Central Uusimaa Rescue Department.

When to call the emergency number 112

The emergency number is

112

Dial the emergency number if a situation threatens

- life
- health
- property
- environment.

My name

My home address

My municipality

My telephone number

When you call the emergency number, tell who you are and where you are calling from.



Answer the questions and follow the instructions.

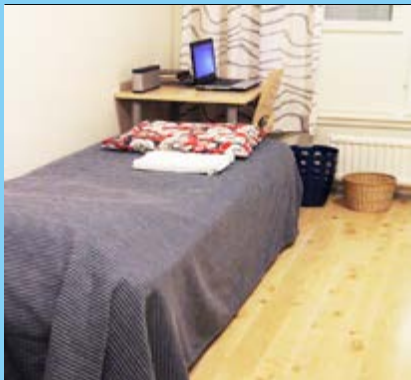
Do not hang up until you get the permission to do so.

A safe and clean home

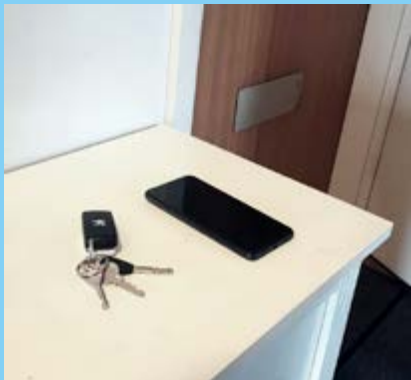


In a messy home, you may trip and hurt yourself.

Exiting a messy home in an emergency is difficult.



Keep your home clean!



Keep your keys and phone where they are easy to find.

In the kitchen



Do not store anything on the stove.



Keep the stove surroundings clean.



Do not put aluminium foil or metal dishes into the microwave.

Safe use of electrical devices



Switch off devices when not using them.



Do not use broken electrical devices.



Unplug the charger when the device is fully charged. A charger left in a socket may cause a fire.

Safe use of electrical devices



Do not cover electrical devices.



Use only one extension cord. Connecting them may cause an overload and a fire.



Use extension cords with an on/off switch.

Switch them off when you leave home. Also switch them off at night.

Candles



Candles can cause a fire.
Do not leave burning
candles unattended.



Make sure that candles
are not too close
to each other.

Use a heat-resistant and
stable candleholder.



Candles with batteries
are safer than regular
candles.

Smoking



If you smoke,
only smoke outside.



Throwing a
cigarette stub
on the ground
may cause a fire.



Extinguish your
cigarette properly
using a cigarette bin
or ashtray.

What to do in case of fire



Fire produces smoke.
Smoke is dangerous.



A smoke alarm warns
about smoke with
a loud sound.

Test your smoke alarm
regularly.



If your home is on fire,
leave.

What to do in case of fire



Close the door behind you
when leaving.
Closed doors can
slow down the fire and
prevent smoke
from spreading.



Do not enter a smoky area.

If the emergency exit
is filled with smoke,
stay inside.

The emergency
number is

112

Call 112 for help.

Your own safety

Choose yes 😊 or no 😞.

	yes	no
I know the emergency number.	😊	😞
I remember my home address.	😊	😞
My home is clean. My floors are clear of things that I could trip on.	😊	😞
I keep my phone and house keys where they are easy to find.	😊	😞
I keep my stove and its surroundings clean.	😊	😞
My electrical device at home are not damaged.	😊	😞
I switch off my electrical devices when I am not using them.	😊	😞
I know what kind of dishes can be put into the microwave.	😊	😞
I have a working smoke alarm in my home.	😊	😞
I know what to do if my smoke alarm sounds.	😊	😞